



# F-Series

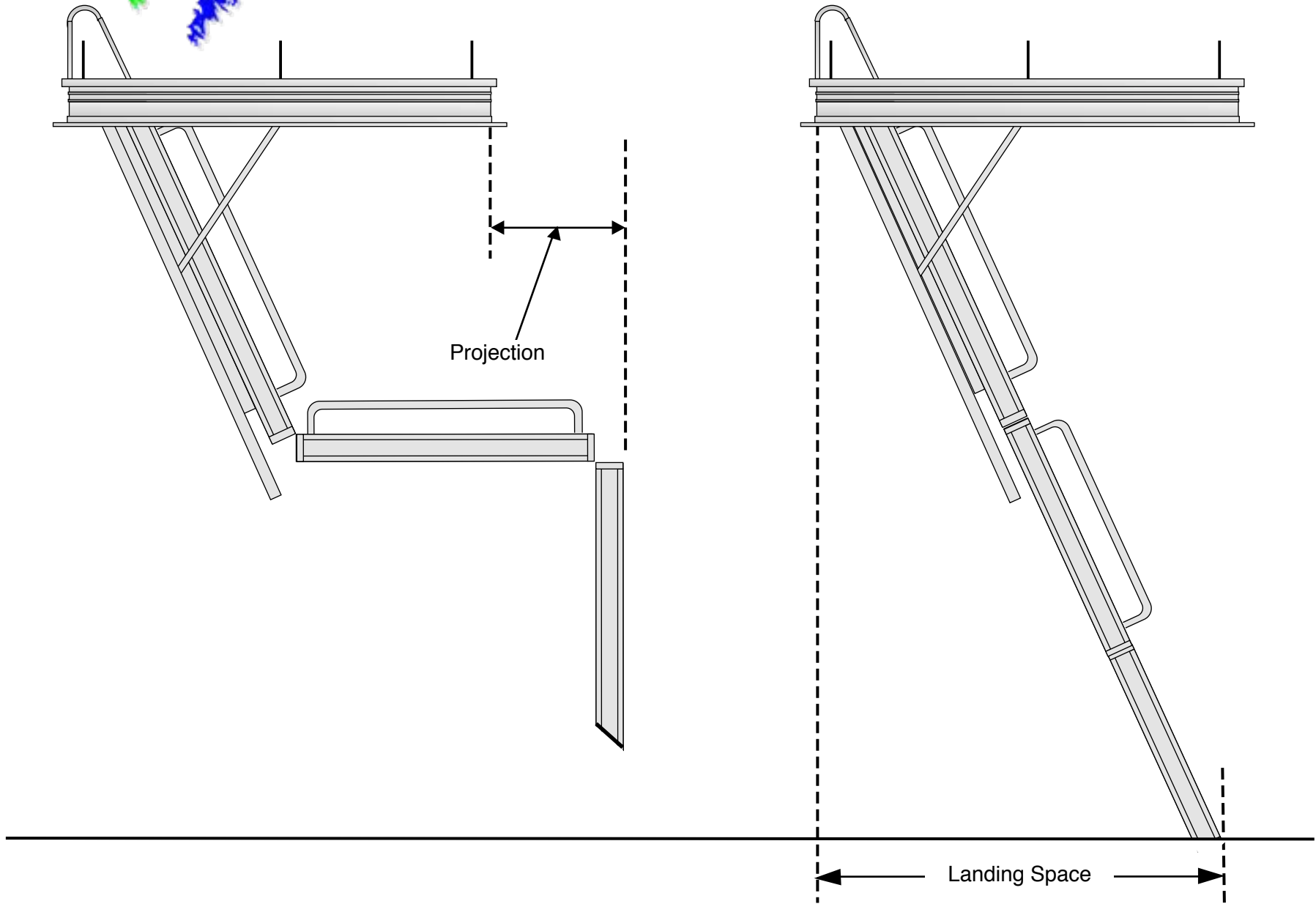
## Specifications - Page 1 of 3

Series	Model #	Rough Opening Dimension	Stair Frame Dimension	Tread Width	Tread Depth	# of Treads	Unit Weight	Floor-to-Ceiling Height Range	Stair Projection (Page 2)	Landing Space (Page 2)
F-8	F2260-8	22 1/2" X 60"	22" X 59 1/2"	10"	2 3/4"	10	111 lbs.	7' - 4" to 8' - 4"	8"	63"
	F3060-8	30" X 60"	29 1/2" X 59 1/2"	17"			123 lbs.			
F-9	F2260-9	22 1/2" X 60"	22" X 59 1/2"	10"	2 3/4"	11	117 lbs.	8' - 2" to 9' - 4"	13"	67"
	F3060-9	30" X 60"	29 1/2" X 59 1/2"	17"			130 lbs.			
F-10	F2260-10	22 1/2" X 60"	22" X 59 1/2"	10"	2 3/4"	13	124 lbs.	9' - 4" to 10' - 4"	18"	66"
	F3060-10	30" X 60"	29 1/2" X 59 1/2"	17"			138 lbs.			
F-11	F2260-11	22 1/2" X 60"	22" X 59 1/2"	10"	2 3/4"	15	131 lbs.	10' - 8" to 11' - 2"	21"	69"
	F3060-11	30" X 60"	29 1/2" X 59 1/2"	17"			146 lbs.			
F-12	F2260-12	22 1/2" X 60"	22" X 59 1/2"	10"	2 3/4"	16	135 lbs.	11' - 8" to 12' - 2"	27"	73"
	F2560-12	25 1/2" X 60"	25" X 59 1/2"	12 3/4"			140 lbs.			
	F3060-12	30" X 60"	29 1/2" X 59 1/2"	17"			153 lbs.			
F-13	F2275-13	22 1/2" X 75"	22" X 74 1/2"	10"	2 3/4"	17	153 lbs.	12' - 6" to 13' - 4"	17"	77"
	F2575-13	25 1/2" X 75"	25" X 74 1/2"	12 3/4"			159 lbs.			
	F3075-13	30" X 75"	29 1/2" X 74 1/2"	17"			173 lbs.			
F-14	F2275-14	22 1/2" X 75"	22" X 74 1/2"	10"	2 3/4"	19	159 lbs.	13' - 3" to 14' - 4"	24"	80"
	F2575-14	25 1/2" X 75"	25" X 74 1/2"	12 3/4"			164 lbs.			
	F3075-14	30" X 75"	29 1/2" X 74 1/2"	17"			176 lbs.			
F-15	F2275-15	22 1/2" X 75"	22" X 74 1/2"	10"	2 3/4"	21	165 lbs.	14' - 8" to 15' - 4"	30"	87"
	F2575-15	25 1/2" X 75"	25" X 74 1/2"	12 3/4"			172 lbs.			
	F3075-15	30" X 75"	29 1/2" X 74 1/2"	17"			182 lbs.			



# F-Series

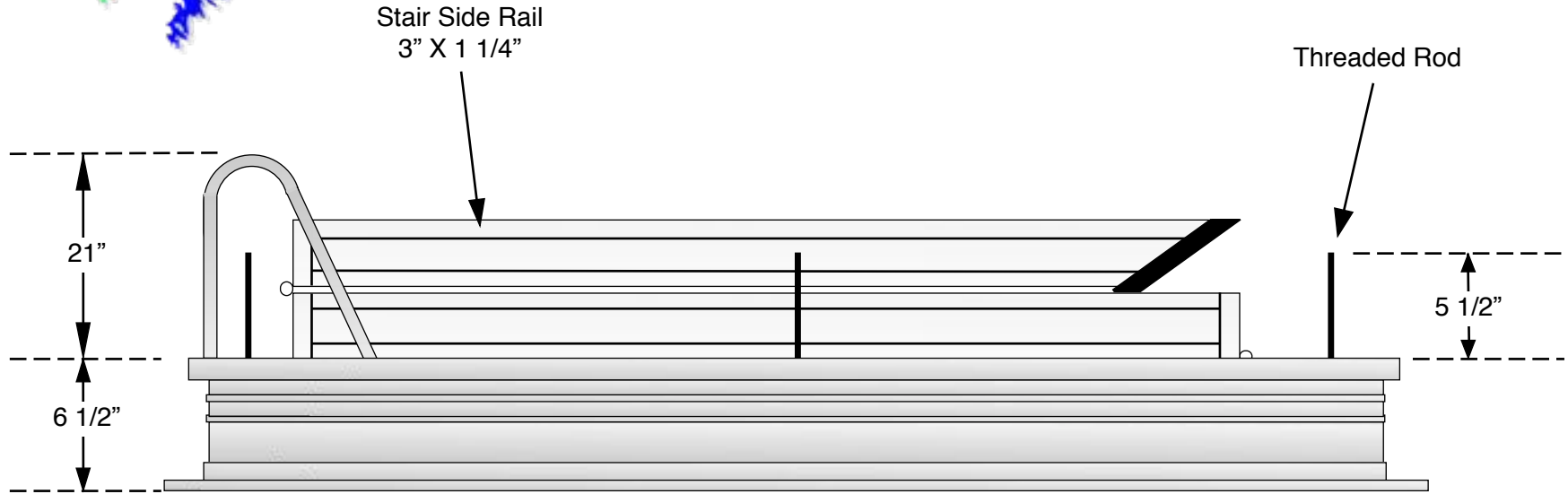
## Specifications - Page 2 of 3



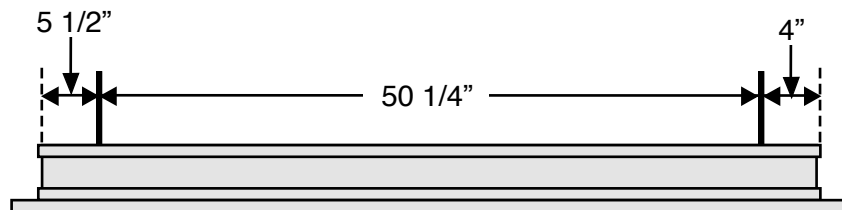


# F-Series

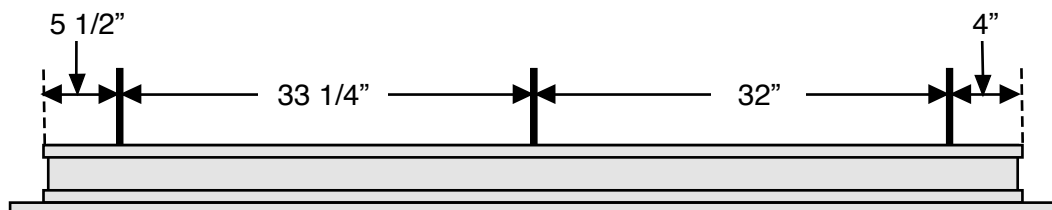
## Specifications - Page 3 of 3



Threaded Rod Placements - 60" long models



Threaded Rod Placements - 75" long models



Standard installation hangers provided for threaded rods will accommodate beam heights up to a maximum of 12".

Optional extended threaded rod kits are available for taller beams up to a maximum 15".

**Standard Stair Hanger**  
Max beam height - 12"

**\*\* Optional Hanger \*\***  
4" X 9 1/2"

